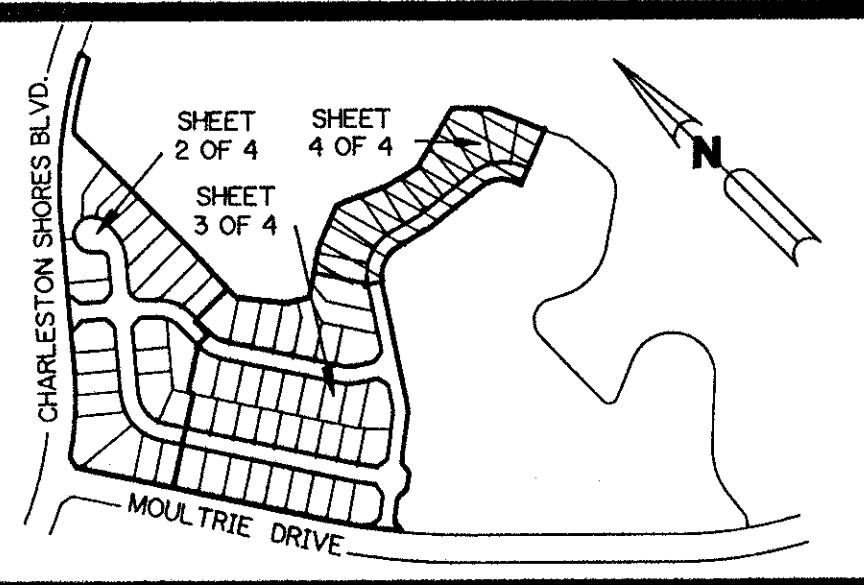


A PART OF LAKE CHARLESTON PLANNED UNIT DEVELOPMENT

# LAKE CHARLESTON - TRACTS T & V - PLAT ONE

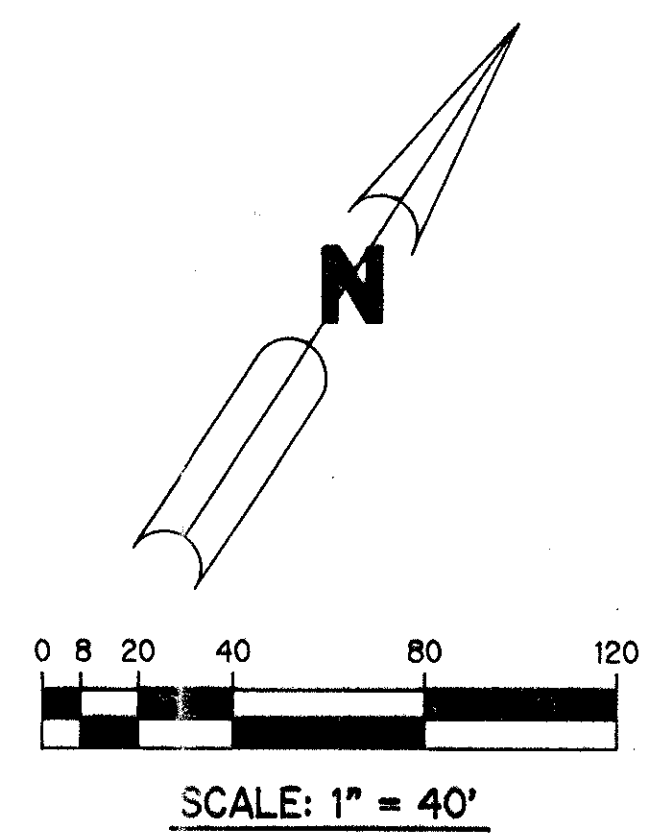
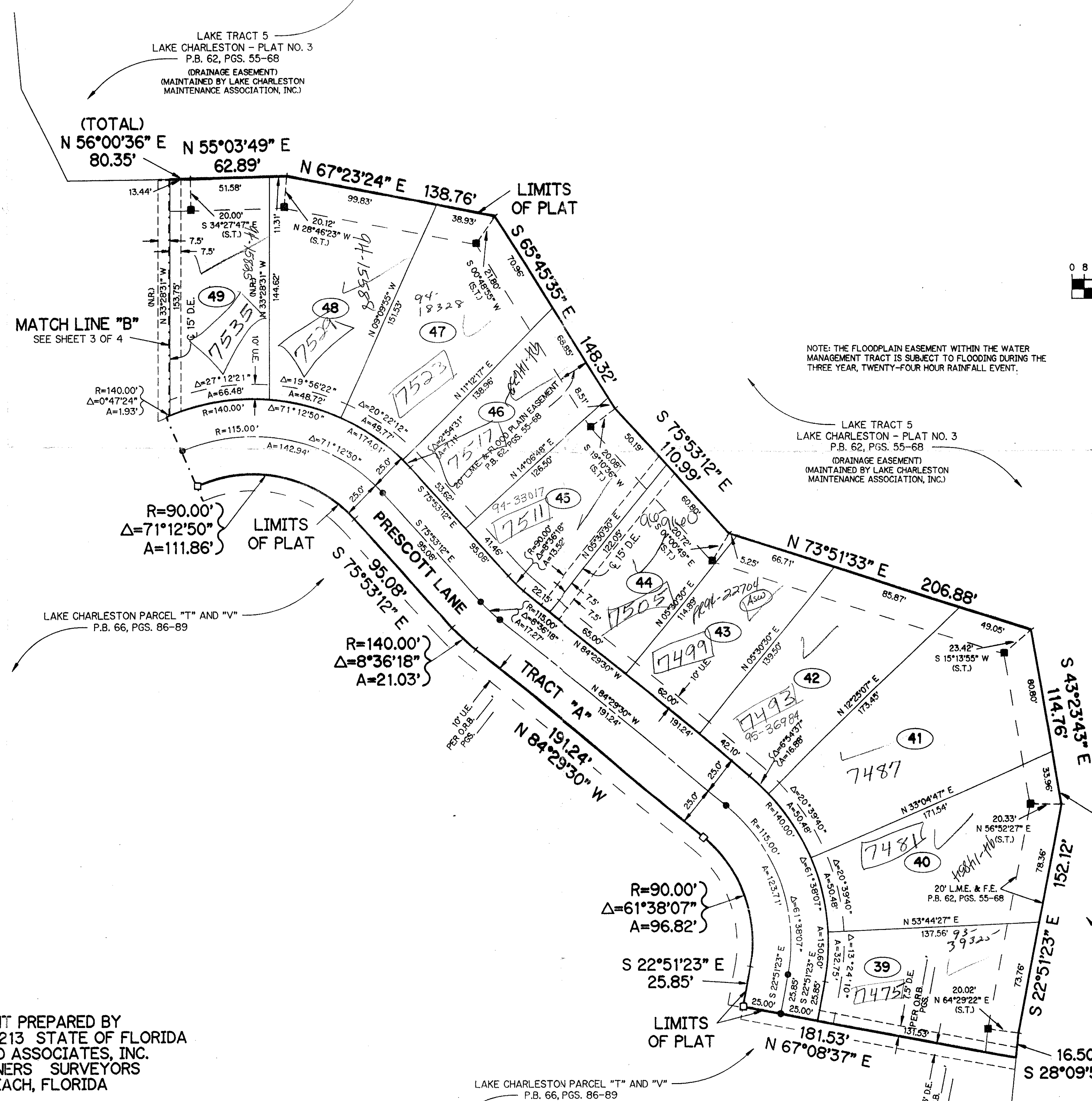
BEING A REPLAT OF A PORTION OF TRACTS T AND V OF LAKE CHARLESTON PLAT NO.3 AS RECORDED  
IN PLAT BOOK 62, PAGES 55-68, PUBLIC RECORDS OF PALM BEACH COUNTY, FLORIDA  
SECTION 9, TOWNSHIP 45 SOUTH, RANGE 42 EAST  
PALM BEACH COUNTY, FLORIDA



KEY MAP  
N.T.S.

SHEET 4 OF 4

JANUARY, 1993



- LEGEND:**
- - PERMANENT REFERENCE MONUMENT, PLS #4213 - SET
  - - PERMANENT REFERENCE MONUMENT, PLS #4213 - FOUND
  - - PERMANENT CONTROL POINT, PLS #4213
  - Δ - DELTA ANGLE
  - D.E. - DRAINAGE EASEMENT
  - F.E. - FLOOD PLAIN EASEMENT
  - L.A.E. - LIMITED ACCESS EASEMENT
  - L.M.E. - LAKE MAINTENANCE EASEMENT
  - N.R. - NOT RADIAL
  - O.R. - OFFICIAL RECORD
  - O.R.B. - OFFICIAL RECORD BOOK
  - OS - OPEN SPACE
  - P.B. - PLAT BOOK
  - P.G.S. - PAGES
  - P.L.S. - PROFESSIONAL LAND SURVEYOR
  - P.U.D. - PLANNED UNIT DEVELOPMENT
  - R - RADIUS
  - R.O.W. - RIGHT-OF-WAY
  - S.T. - SURVEY TIE LINE
  - U.E. - UTILITY EASEMENT

NOTE: THE FLOODPLAIN EASEMENT WITHIN THE WATER MANAGEMENT TRACT IS SUBJECT TO FLOODING DURING THE THREE YEAR, TWENTY-FOUR HOUR RAINFALL EVENT.

PET. 86-96A  
ALOC. #0001  
5/2/93

THIS INSTRUMENT PREPARED BY  
PERRY C. WHITE P.L.S. 4213 STATE OF FLORIDA  
LAWSON, NOBLE AND ASSOCIATES, INC.  
ENGINEERS PLANNERS SURVEYORS  
WEST PALM BEACH, FLORIDA

LAKE TRACT 5  
LAKE CHARLESTON - PLAT NO. 3  
P.B. 62, PGS. 55-68  
(DRAINAGE EASEMENT)  
(MAINTAINED BY LAKE CHARLESTON  
MAINTENANCE ASSOCIATION, INC.)

0533-019

71/74

BOOK 71  
PAGE 71  
FLOOD ZONE B  
FLOOD MAP # 1854  
ZONING RTS  
QUAD # 49  
SE 86-96  
PUD NAME LAKE CHARLESTON  
TAZ 439